

TRANSFORMING CITIES
SHAPING THE FUTURE

MEINHARDT

MALAYSIA



We are one of the largest
international project
management and
integrated engineering
services firms **in Malaysia.**

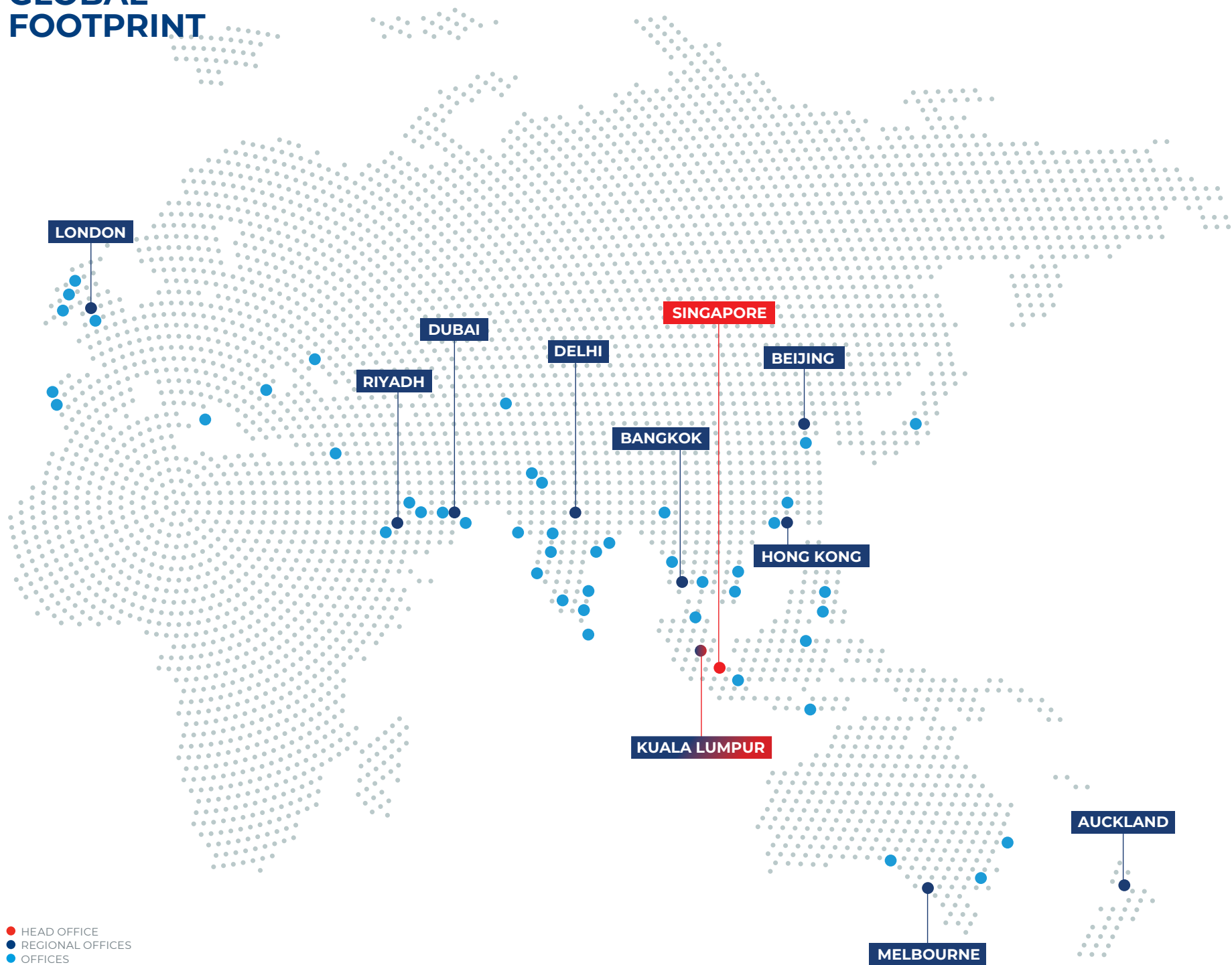
With a presence spanning over 35 years, Meinhardt has firmly established itself as a leading engineering consultancy in Malaysia. As one of the most respected companies in the industry worldwide, and the largest independent engineering firm in Asia, Meinhardt brings a wealth of expertise to the Malaysian market.

Meinhardt's portfolio in Malaysia showcases its versatility, encompassing diverse projects across various sectors. From iconic buildings and precincts to critical infrastructure projects, the company has left an indelible mark on the nation's skylines and transportation networks. Major cities like Kuala Lumpur, Johor Bahru, and Penang have benefited from Meinhardt's engineering prowess, which spans tall buildings, bridges & highways, aviation facilities, metros, railways, ports, institutional and industrial & technology projects.

Renowned for delivering highly-buildable and sustainable solutions, Meinhardt has consistently exceeded client expectations in Malaysia. The firm's commitment to challenging conventional practices and delivering quality work has fostered strong relationships with clients, many of whom are repeat customers. This loyalty is a testament to Meinhardt's personalized approach and cost-effective engineering solutions, which save time and money for its clientele.

With a global reach and localized understanding, Meinhardt has successfully collaborated with clients from around the world, providing innovative and tailored solutions to meet their unique requirements. As a respected engineering consultancy with a personal touch, Meinhardt continues to push boundaries and redefine industry standards, solidifying its position as a trusted partner in Malaysia's ongoing development and progress.

GLOBAL FOOTPRINT





61

Offices Worldwide

6,000

Professionals

69

Years Track Record

700+

Global Awards

\$30B

Value of Projects Annually

ENR 2023

Largest Independent Engineering
Consulting Firms in Asia

Shahzad

NASIM

Group Executive Chairman

“

Meinhardt is one of the most respected engineering companies in the world and the largest independent engineering consultancy in Asia. Over the last 69 years, the Meinhardt brand has become synonymous with trust, innovation and engineering excellence around the world.

We are in the people business and investing in human capital is paramount for our business longevity. Our 6000 staff believe in challenging the status quo and making the impossible possible.





Omar

SHAHZAD

Group CEO



Our clients tell us we provide comprehensive innovative highly buildable and sustainable solutions that help clients save time and money.

A global company with 61 offices, we help clients solve their most pressing infrastructure and urban challenges, while maintaining the personal touch. That is why more than half of our clients are repeat customers who have been with us for at least 15 years.



Dr. Lim

BOON TIONG

Managing Director
Meinhardt Malaysia



Meinhardt Malaysia is proud to be the designers and engineers of many iconic landmarks in two important precincts in Malaysia – KLCC and KL Sentral.

We are also involved in iconic infrastructure projects in Malaysia – we are the Reference Design Consultants for two contracts for the Kuala Lumpur-Singapore High Speed Rail and are supporting the East Coast Rail Link Double Tracking Rail project.



The Meinhardt Group in Malaysia has undergone substantial growth, currently comprising a team of over 400 professionals dedicated to engineering, planning, project management, and technical advisory services. Our expertise spans across a diverse range of projects within the built environment.

Our staff benefit from access to Meinhardt's global network, which provides a wealth of resources, expertise and experience. This empowers them to manage intricate urban and infrastructure projects with confidence.

Ir. Ong

CHAOW CHIUN

Deputy Managing Director
Meinhardt Malaysia





• **Timothy Soebroto**
Façade Regional Director



• **Ir. Lee Yan Wu**
Director
Electrical



• **Ir. Jeffrey Chan Ka Seong**
Associate Director
Mechanical



• **Ir. Alex Teh Su Khing**
Associate Director
Electrical



• **Ir. Dr. Yew Wan Tian**
Associate Director
Geotech & Infra



• **Ir. Hj. Mohamad Sobri**
Advisory Director



• **Ir. Jill Fluer C. Bensing**
Technical Director



Vinesh

NATALI

Global Head & Managing Director
EPCM Group

I have had the privilege to set wind to the sails of Meinhardt EPCM to steer it into a global firm over the last 8 years. Meinhardt EPCM is earmarked as one of the fastest growing businesses within the Meinhardt Group securing its position as a globally recognised brand amongst Top tier clients.

We believe that success is not final, failure is not fatal. It is the courage to continue that counts. At Meinhardt EPCM, we embrace a progressive and positive mindset, continually seeking new opportunities for innovation and improvement in all aspects of our work.

We cultivate a growth mindset within our team, fostering a culture where challenges are viewed as opportunities to learn and develop. Through collaboration, adaptability, and a commitment to excellence, we strive to constantly evolve and exceed expectations, driving sustainable growth and success for our clients and stakeholders.

Keep on Imagining – Believing and Achieving.



At Meinhardt EPCM, our aspiration is to drive a high-performance culture, putting our Clients and Key Stakeholders needs first, remaining true to our values, culture and our purpose; by doing more for less by producing superior quality service and highly satisfied customers.

We acknowledge that our journey towards becoming the market leader for EPCM services in Malaysia is still far from over and has only just begun. With time and God's grace, we shall get there.

Dinesh

SUBRAMANIAM

Country Operations Head
EPCM Malaysia





• **Andrew Chan**
Technical Director/ Deputy
Country Operations Head
EPCM Malaysia



• **Julian Jackson**
Regional Technical Director



• **Senthil N. Shanmugavel**
Technical Director



• **Darvin Ramodran**
Regional Sr. Associate
Director – HSEQ &
Sustainability



• **Syazana Mohamad**
Regional Sr. Associate
Director – PMO/IGCD



• **Giam Siew Mei**
Regional Sr. Finance Manager



• **Mey Chang**
Associate Director

Projects @ KL City Centre

SENTRAL SUITES

MENARA SHELL & ASCOTT KL SENTRAL

ALOFT HOTEL & NU TOWER

KL SENTRAL STATION

CIMB TOWER

ST. REGIS KL

LUCENTIA RESIDENCES

MERDEKA 118

Tallest Building in Malaysia
..... 679m

HOTEL LOT 51 DAYABUMI

LALAPORT BBCC

THE ROBERTSON

VANKE BUKIT NANAS



WISMA KFC

GENESIS TOWER

PARKROYAL HOTEL

MENARA AIA SENTRAL

FOUR SEASONS PLACE

MENARA PETRONAS 3

KLCC DISTRICT COOLING

KL CONVENTION CENTRE

OXLEY TOWERS

CAPRI BY FRASER

ILHAM BARU TOWER

PRUDENTIAL TOWER TRX

APPLE STORE TRX

MENARA IQ@TRX

..... 343m

Merdeka 118

Merdeka 118 tower, in Kuala Lumpur, is the 2nd tallest building in the world and the tallest in Southeast Asia.

The skyscraper is designed to resemble Tunku Abdul Rahman's right hand raised during the Merdeka Proclamation with an unclenched fist to signify the peaceful nature of the nation's struggle for independence. As the most visible icons defining the skylines of modern cities, symbolise the economic vitality of a nation.

Meinhardt provided Civil & Structural Engineering to D&B Contractor (alternative tender design and post-contract engineering design).

→ C&S Engineering for Contractor

679m

Petronas Tower 3

Petronas Tower 3 is another addition to the world class Petronas Twin Towers offices. The 58-storey Petronas Tower 3 features a 6-level extension to the Suria KLCC shopping mall plus office spaces. There is also an exclusive entrance to the 5-star Mandarin Oriental Hotel from Tower 3.

The design of the building was optimised for Malaysia's tropical climate – the glass facade controls heat gain and glare in the offices.

- Civil & Structural Engineering
- Facade Engineering



Petronas Tower 3's
façade is optimised
for Malaysia's
tropical climate

KL Convention Centre

- Civil & Structural Engineering
(Supervision Works)

Four Seasons Place

Four Seasons Place KL enhances Kuala Lumpur's skyline, taking pride of place alongside the iconic Petronas Twin Towers as the 5th tallest building in Malaysia.

Four Seasons Place Kuala Lumpur is a mixed commercial and residential building that comprises the Four Seasons Hotel and Residences upon a retail podium. The 77-storey hotel and residential building overlooking the 50-acre KLCC park. The building is also one of the slenderest tall buildings in the world.

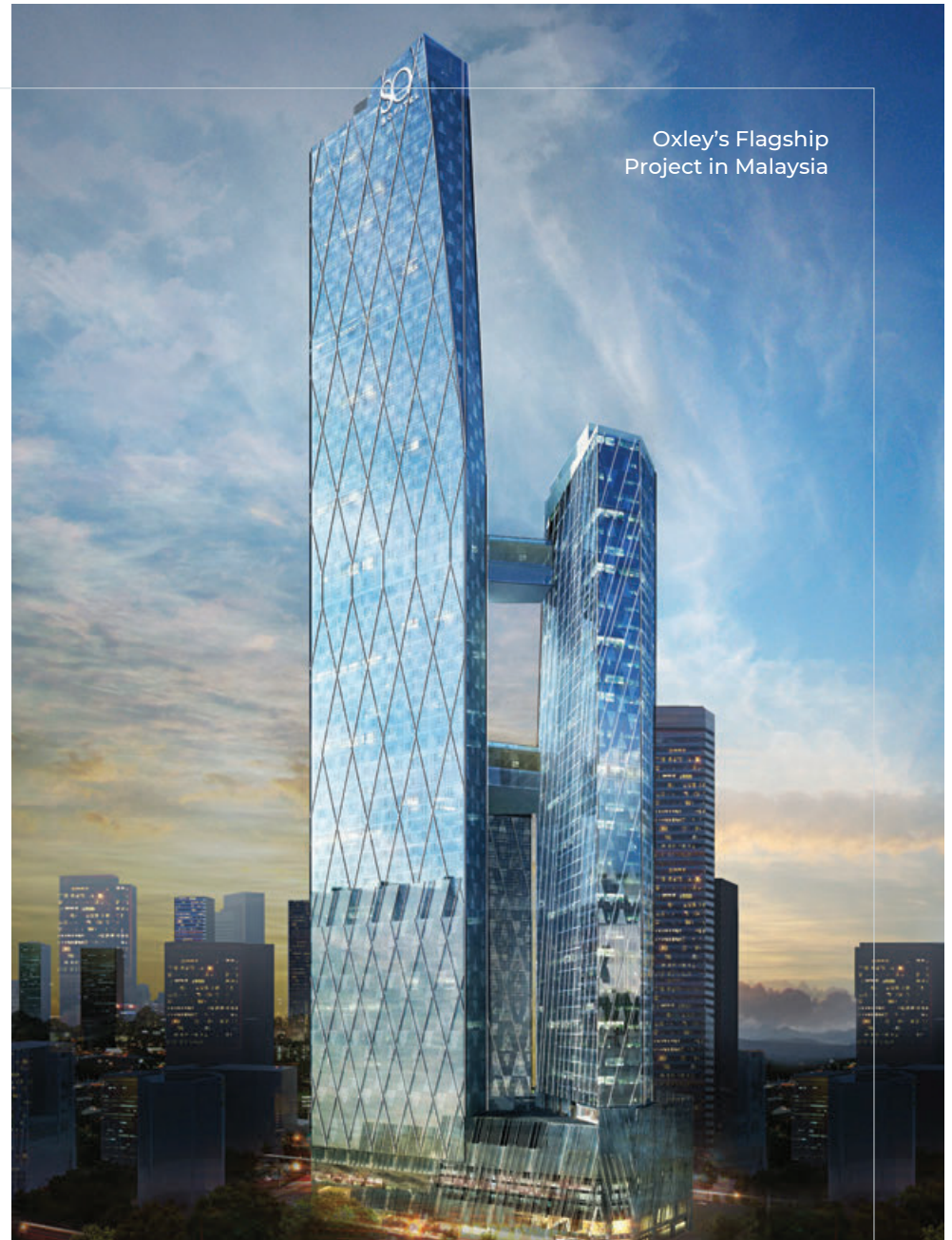
343m

- Civil & Structural Engineering
- Facade Access

Oxley Towers

Situated near the iconic Petronas Twin Tower and Kuala Lumpur City Centre (KLCC), Oxley Towers KLCC is set to transform Kuala Lumpur's Central Business District skyline with its magnificent and modern towers that house some of the best retail, services and hospitality brands in the world.

- Mechanical & Electrical Engineering



Oxley's Flagship Project in Malaysia

Suria KLCC Mall

- Civil & Structural Engineering
(Independent design review and checking)

Projects @ KL Sentral

A “City-within-a-City”

The KL Sentral masterplan, designed by world famous architect Dr. Kisho Kurokawa, creates a “City-within-a-City”.

KL Sentral combines integrated master planning with innovative engineering to create Malaysia’s largest multi-modal transit hub and one of the country’s most vibrant business, residential and commercial hubs.

Meinhardt are the proud engineers and planners behind many of the iconic developments in KL Sentral, including Stesen Sentral KL, Platinum Sentral, Menara Shell & Ascott Sentral, Aloft Hotel & NU Towers, Suasana Sentral, Menara Allianz Sentral, Quill 7 Axiata Tower, Sooka Cardiac & Vascular Centre, as well as CIMB’s and UEM’s Headquarters.

Our deep expertise in a wide variety of infrastructure and building projects made us the choice partner for many of our clients in KL Sentral.

ST. REGIS KL

PLATINUM SENTRAL (LOT E)

MENARA ALLIANZ SENTRAL (LOT G)

CIMB TOWER

STESEN SENTRAL KL

BOWLING ALLEY FOR NU SENTRAL

QUILL 7 AXIATA TOWER

ALOFT HOTEL



MENARA UEM

MENARA SHELL & ASCOTT SENTRAL

SUASANA SENTRAL

SENTRAL SUITES

BANKRAKYAT

Stesen Sentral KL

Malaysia's Largest
Transportation Hub

Stesen Sentral, Malaysia's largest transit hub, is Kuala Lumpur's integrated rail transportation centre. This integrated multi-modal transportation hub provides direct access to six rail systems and links to major highways. It is directly connected to the Kuala Lumpur International Airport, Putrajaya (the Federal Government Administrative Centre), Cyberjaya and key areas within the Multimedia Super Corridor.

Meinhardt are the Civil and Structural engineers for this transportation showcase in Malaysia's capital.

→ Civil & Structural Engineering

Awards

- Winner, FIABCI-Malaysia Award of Distinction, Public Sector Category (2002)
- Finalist, FIABCI Prix D'Excellence Awards (2003)
- Honorary Mention for Excellence in Architecture by Persatuan Arkitek Malaysia (2003)
- Best Steel Roof Design (2002)

Platinum Sentral

Multi award winning Platinum Sentral is a green development built on top of Malaysia's busiest railway interchange and multi-modal transit hub. It is a World Gold Winner of the International Real Estate Federation (FIABCI) World Prix D'Excellence Awards 2014 (Sustainable Development Category) as well as the winner of the FIABCI Malaysia Property Award 2013 (Sustainable Development Category), the Oscar equivalent for property and real estate development.

It is also the first commercial development in Malaysia to be awarded a Platinum rating under Singapore's Green Mark rating scheme and certified under Malaysia's Green Building Index. The project features 2-acres of green spaces which includes green roof terraces, sky gardens, facades and inclined podium walls.

- Civil & Structural Engineering
- Facade Engineering



First commercial development in Malaysia to be awarded a Platinum rating under Singapore's Green Mark rating scheme and certified under Malaysia's Green Building Index

Sooka Cardiac & Vascular Centre KL

- Civil & Structural Engineering



Menara Shell & Ascott Sentral

First integrated commercial development with industry leading environmental certification.

Menara Shell is a state-of-the-art Grade 'A' Office Tower that features Malaysia's first integrated commercial development with LEED (Leadership in Energy and Environmental Design) Gold standards - a US-based green building rating system.

Harnessing rainwater and ambient temperature, the building ingeniously regulates its internal climate, exemplifying harmony between innovation and environmental consciousness.

→ Civil & Structural Engineering

Menara UEM

United Engineers Malaysia Berhad's (UEM) headquarters in KL Sentral houses the global headquarters of one of Malaysia's largest engineering-based infrastructure and services group. The 29-storey office building consists of an auditorium, state-of-the-art meeting rooms, a cafeteria, recreational facilities and banking facilities.

→ Foundation Design



The glass volume in the middle symbolises a priceless jewel being clasped by UEM Group's pair of caring hands and this signifies the careful nurturing and upholding of UEM Group's corporate mission and core values.

NU Towers Menara Allianz Sentral

→ Mechanical & Electrical Engineering

Toppen Shopping Centre

Development of a four storey shopping centre with one level of basement car-park and multi-user roof space. Total gross floor area of 2 million square feet. The shopping centre is designed to connect to the IKEA building constructed in earlier phase and a mixed-use office tower in later phase. Meinhardt was appointed by Ikano as Civil and Structural Engineer to further develop the design from Concept Stage to delivery of the full Detailed Design and Construction Supervision.

→ Civil & Structural Engineering

Central i-City Shah Alam

Central i-City sprawls across 1.5 million square feet of gross floor area nestled within the hub of i-City, Shah Alam, Selangor.

- Civil & Structural Engineering
- Mechanical & Electrical Engineering



Sunway Pyramid Shopping Mall Phase 2

Meinhardt provided mechanical & electrical engineering consultancy services for Sunway Pyramid Phase II Development. The extension adds another 80,000 square meter to the existing shopping complex, forming one of the largest shopping centres in Malaysia.

- Mechanical & Electrical Engineering



Bukit Bintang City Centre

Located near the famous Bukit Bintang Street in Kuala Lumpur, the 6.7 million square feet development (83 football fields) will comprise a retail mall, entertainment hub, a four-star hotel, strata office, two blocks of serviced apartments, parks and gardens as well as a transit hub.

Meinhardt Façade Technology (Malaysia) and Meinhardt (Malaysia) Sdn Bhd are providing façade design and façade access consultancy services and superstructure works for Parcel 5–Strata Office 2 respectively, for the first LaLaport branded shopping mall in Southeast Asia and the high-rise residential development, Lucentia Residences.

- Façade Design
- Façade Access
- Civil & Structural Engineering (Superstructure works)

CelcomDigi Tower

33-storey office tower with a distinctive sinuous silhouette that is accentuated by a concertina-style curtain wall located in PJ Sentral, Petaling Jaya.

- Civil & Structural Engineering
- Façade Engineering



Menara CIMB

Menara CIMB is a 40-storey office tower that houses the headquarters for CIMB Investment Group located in KL Sentral, Kuala Lumpur.

- Mechanical & Electrical Engineering
- Peer Review



Menara iQ@TRX

HSBC's new Malaysia HQ comprising a 34-storey office tower on a 4-storey podium at Tun Razak Exchange, Kuala Lumpur.

- Civil & Structural Engineering
- Façade Engineering

Jesselton Twin Towers Kota Kinabalu

Jesselton Twin Towers is currently the tallest landmark in Borneo Island comprising 192m tall twin residential towers located in the Golden Triangle of Kota Kinabalu, Sabah.

Strategically located in Golden Triangle of Kota Kinabalu—Urban amenities such as schools, medical centres, malls and recreational spots are within close proximity.

Situated in one of World's Most Liveable Places - Breath-taking cityscape of bay & mountain with temperate climate & clean air.

- Civil & Structural Engineering
- Mechanical & Electrical Engineering

The Robertson Condominium

The Robertson is a mixed residential and commercial development featuring two towers of service apartments, one rising 35-storeys and the other 39-storeys towers alongside a 10-storey commercial complex. It is strategically located along Jalan Robertson in the heart of Kuala Lumpur.

→ Civil & Structural Engineering



Amari Hotel & Suasana Iskandar Suites, JB

Amari Johor Bahru, a luxurious 5-star hotel and the Suasana Suites are conveniently located in the heart of Johor Bahru's central business district, situated on Jalan Wong Ah Fook.

→ Civil & Structural Engineering
→ Mechanical & Electrical Engineering

Vivo & SOHO Suites, Overall Infrastructure for 9 Seputeh

Vivo Residential Suites and SOHO suites is a mixed-use commercial development located within the 9 Seputeh integrated mall, office and residential hub, situated along Old Klang Road in Kuala Lumpur.

- Civil & Structural Engineering
- Infrastructure Masterplanning





TRiARA Residences, Ara Damansara

TRiARA Residences is an exclusive low-density condominium development situated within the established Ara Damansara township in Selangor.

→ Civil & Structural Engineering



Serini Melawati

Serini Melawati comprises two 38-storey service apartment towers situated within the well-established Melawati township in Selangor.

→ Mechanical & Electrical Engineering

Neuro-Robotics & Cybernics Rehabilitation Centre, Perak

The Socso National Neuro-Robotics and Cybernics Rehabilitation Centre in Ipoh, Perak will be the largest Socso rehabilitation centre in the country and also serve as a Centre of Excellence for the Rehabilitation and Return to Work programme at the local, SEA and global level.

→ Mechanical & Electrical
Engineering





SunMed Residences Bandar Sunway

Addition to the SunMed Residences housing apartment for medical centre staff at Bandar Sunway, Petaling Jaya.

→ Mechanical & Electrical Engineering



Hospital Kapar, Selangor

Hospital Kapar, Selangor is a 300-bedded hospital with specialist medical facilities located in Kapar, Selangor.

→ Civil & Structural Engineering



TNB HQ Complex

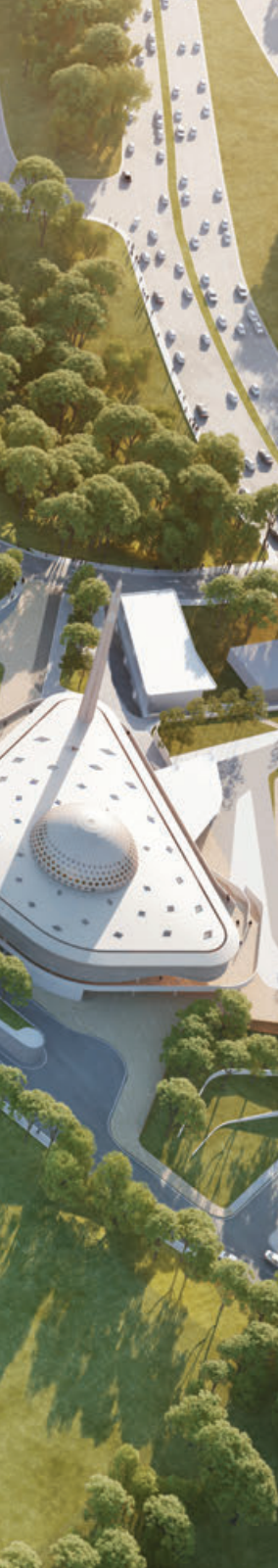
The new TNB corporate headquarters situated in the heart of the city houses TNB's staff under one roof in a campus-style environment - enhancing work synergies and collaboration.

The new TNB Headquarters Complex is located at Jalan Bangsar, Kuala Lumpur.

Area: 166,000 square meter

Next-gen
future-ready
workplace

- Civil & Structural Engineering
- Mechanical & Electrical Engineering
- Facade Engineering
- Specialist Lighting



GBI Certification

Green Building Index (GBI) Platinum

Malaysia's Largest Electric Utility Company, is a Triumph of Sustainability, Innovation and Persistence.

Penang's future multi-modal transportation hub serving the transport needs of the city's commercial and tourism activities.

Penang Sentral

Penang Sentral is set to be a major multi-modal transportation hub serving the transport needs of Penang's commercial and tourism activities.

The 6 million square feet integrated transport, retail, commercial and residential hub is expected to streamline transportation in the state as it is a hub for long and short distance buses, taxis, ferries and trains.

It will house shops, ticketing counters, prayer rooms, a food court and a nursery to accommodate travellers' needs.

→ Civil & Structural Engineering



KLIA Aeropolis Master Plan

Lead Consultant for the KLIA Aeropolis Master Plan. Spanning across approximately 1,600 acres, with the potential of growing up to 8,500 acres.

An aviation-oriented smart city, with Kuala Lumpur International Airport at its heart.

- Lead Consultancy
- Masterplanning



Old Klang Road NPE Bridge

The 9 Seputeh Link Bridge to New Pantai Expressway (NPE) provides convenient and direct access from Old Klang Road to NPE for the residents and visitors of the 9 Seputeh mixed commercial hub.

- Civil & Structural Engineering



Water Intake & Water Supply Main Pipelines @ Bukit Nanas

Diversion of existing water supply main pipelines and construction on a new raw water intake pipe at Bukit Nanas Water Treatment Plant that provides water to 98 square km of the KL city centre.

- Civil & Structural Engineering

Projects @ KL ECO CITY

RESIDENSI VOGUE 1

AMARI HOTEL & VIVA
SERVICE APARTMENT

MERCU 3

HUB

Meinhardt has been appointed as facade designers, responsible for detailed design, facade engineering, and 3D BIM modeling

MERCU 2

RETAIL PODIUM

STRATA OFFICE

BOUTIQUE OFFICE

1

2

3

275kV transmission line from Prai PMU to The Light PMU

Meinhardt is providing Independent Design Verifier services for the 275kV transmission line from Prai PMU to The Light PMU.

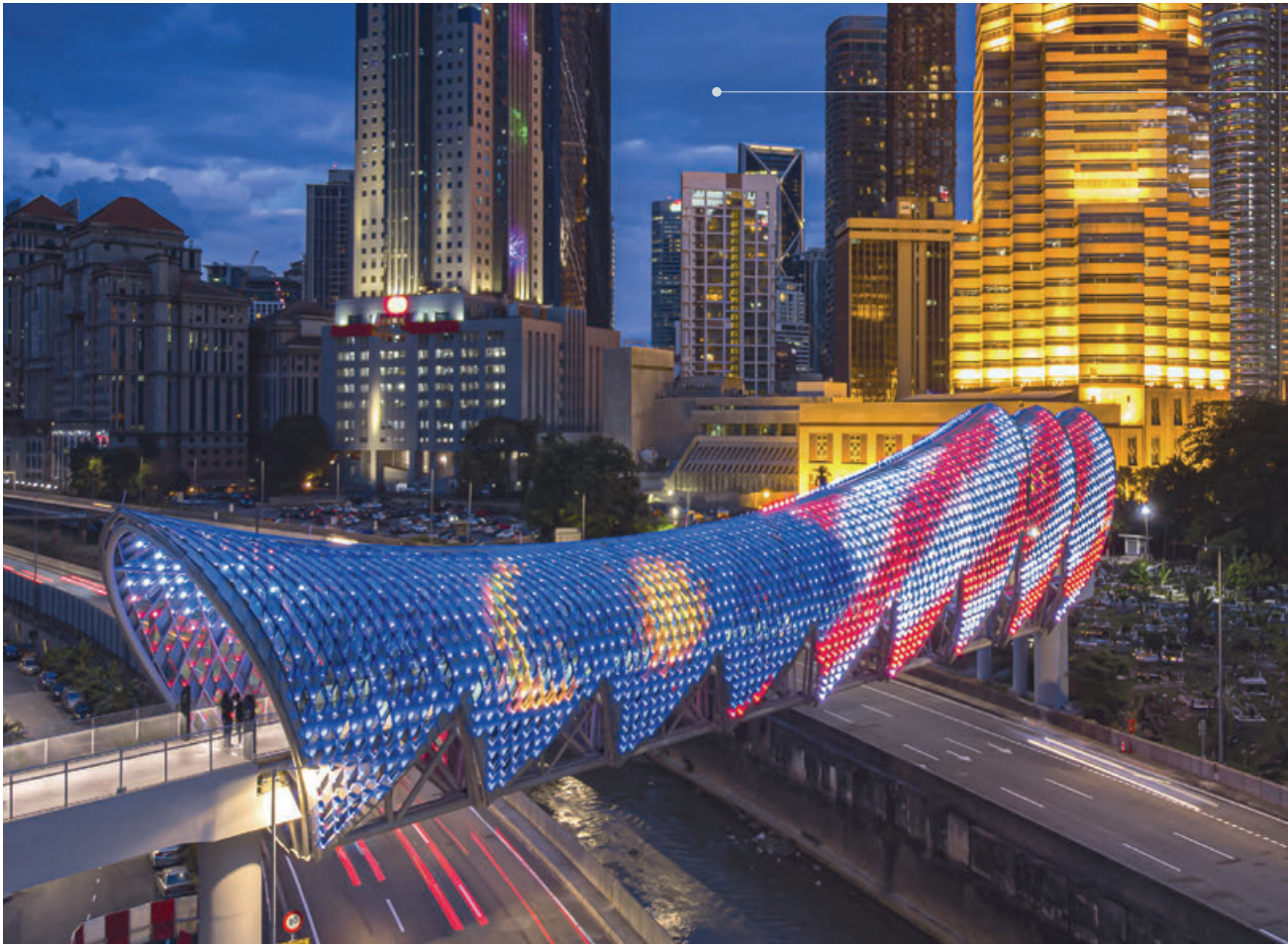
The development comprises an 8.5km overhead transmission line connecting the Prai Power Station (SJ) main inlet substation (PMU) to The Light PMU on Penang Island.

When completed the transmission line is capable of transmitting 2000MW of electricity and will strengthen electricity supply in Penang while the iconic monopoles are set to be an iconic landmark of Penang.

- Geotechnical
- Structural
- Transmission Line
- Wind Engineering

TNB Strengthens Electricity Supply In Penang With Iconic Tower





Saloma Link Bridge

Saloma Link is an iconic pedestrian and bicyclist bridge spanning 69m across the Klang River, connecting Kampung Baru to KLCC in the heart of Kuala Lumpur.

→ Mechanical & Electrical Engineering

Tanjong Agas

Meinhardt provided Civil & Structural Engineering and Infrastructure Master Planning and MEP Engineering services for the Tanjong Agas Oil and Gas & Maritime Industrial Park, Pahang.

→ Civil & Structural
→ Mechanical & Electrical Engineering



Kuantan 188 (Menara Teruntum)

Kuantan 188 previously known as Menara Teruntum is the second tallest observation tower in Malaysia located at the banks of the Kuantan River, Pahang.

The tower features an outdoor sky deck, an observation deck, a viewing deck, an outdoor park with children playground, riverside park and parking lot.

This iconic tower provides 360-degree view of Kuantan City.

- Civil & Structural Engineering
- Mechanical & Electrical Engineering

188m

EPF HQ Kwasa, Damansara

Menara KWSP is the Employees Provident Fund's new 12-storey head office at Kwasa Damansara, Selangor.

- Civil & Structural Engineering
- Mechanical & Electrical Engineering



FINAS HQ Damansara, Selangor

New headquarters building for Filem Nasional Malaysia (FINAS) located at Damansara Damai, Selangor.

- Civil & Structural Engineering
- Facade Engineering

Kuala Lumpur-Singapore High Speed Rail (HSR)

Meinhardt and JV Partner, Systra won two reference design consultant (RDC) contracts for MyHSR's Kuala Lumpur-Singapore High Speed Rail (HSR) project. The first contract is named RDC01 and comprises civil reference design works for the two international stations within Malaysia, namely Bandar Malaysia in Kuala Lumpur and Iskandar Puteri. The second contract is known as RDC03 and involves works such as the civil reference design for the first 38km from Bandar Malaysia Station to the state border between Selangor and Negeri Sembilan.

- Civil & Structural Engineering
- Mechanical & Electrical Engineering

KUALA LUMPUR

PUTRAJAYA

SEREMBAN

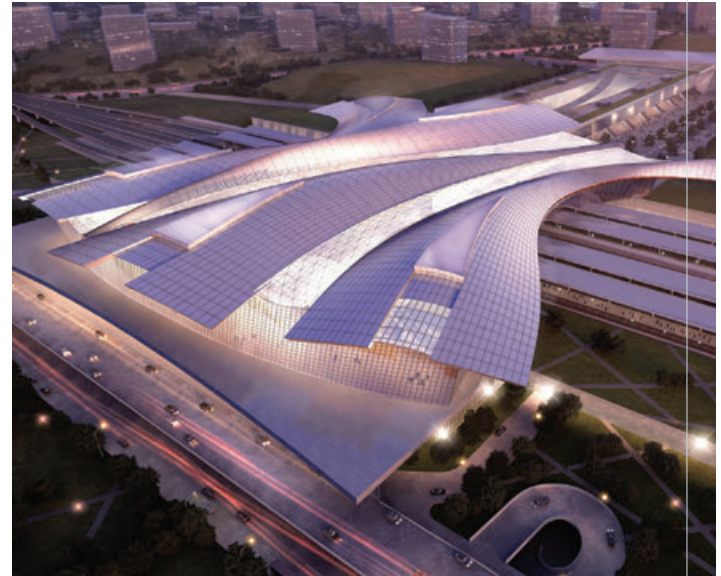
AYER KEROH

MAUR

BATU PAHAT

ISKANDAR
PUTERI

JURONG
EAST



RDC01

Bandar Malaysia Terminal Station

- Urban Station in Kuala Lumpur
- CIQ facilities
- Connection with MRT, Commuter and Airport Line
- Basement + GF + 3 Levels
- Elevated tracks at Level 3, 20m above GF Level
- Total number of tracks/Platforms: 9/9

Iskandar Puteri Passing Station

- Station near the border with Singapore
- CIQ facilities
- 3 Levels
- Total number of tracks: 9 Tracks-At Grade

RDC03

Depot located in Kuala Lumpur

- Light Maintenance and Heavy Maintenance Depot with ancillary buildings
- Track Alignment: 38km including tunnels and elevated sections
- Total Tunnel Length: 34km
- Train Speed inside tunnel: 350km/h

East Coast Rail Link

Meinhardt is working on 4 of 5 ECRL design packages and Supervising Consultancy Services (Stations & Ancillary Building Works / Authorities Submission).

Overall System – Submitting Engineer and Supervision Consultancy Services for trackworks, communication, information, signaling, non-traction power, traction power and all ancillary buildings.

Traction Power Application Infra & Concept Design Works – Planning design for infrastructure between TNB and ECRL.

- C&S and M&E Engineering Professional Engineer Endorsement and Planning Submission
- Engineer Support for Stakeholder Management Matters



- Station in
- Kelantan
 - Terengganu
 - Pahang
 - Selangor

ECRL STATIONS



PACKAGE 2

Kemasik to Kuantan Port City
(CH213–313)

Phase 1

- 4 stations
- 83km on grade tracks (earthworks)
- 25 nos. of bridges – 5.8km
- Viaducts – 4.9km
- 3 no. of tunnels – 7.2km
- Drainage culverts, road crossings, utilities

PACKAGE 3

Kota Sas to Temerloh (CH313 – CH458)

- 4 stations
- 111km on grade tracks (earthworks)
- 35 nos. of bridges – 23.6km
- 22 nos. of tunnels – 9.3km
- Drainage culverts, road crossings, utilities

PACKAGE 4

Bentong to Gombak (CH458 – CH524)

- 2 stations
- 22.5km on grade tracks (earthworks)
- 43 no. of bridges – 21.3km
- 19 no. of tunnels – 24km
- Drainage culverts, road crossings, utilities

PACKAGE 5

Serendah to Port Klang

- 4 stations
- 25km of tracks
- Double track bridge – 3.4km
- Tunnel – 14.44km
- Double track sub-grade – 7.15km

Shell Retail Fuel Programme

Shell Malaysia's Mobility Retail Downstream program includes provision of EPCM services for the entire retail network in West & East Malaysia. It involves the construction of new retail fuel stations and Co-locator buildings with drive thru F&B outlets as a value-added upgrade to existing stations with potential. Apart from that, Meinhardt is also involved with converting stations with GBI certifications which involves introduction of solar panels and other green elements within the stations as part of Shell's low carbon journey in Malaysia. At present, Meinhardt is also collaborating with Shell & Porsche in rolling out the installation of high-speed chargers at selected stations as part of the overall EV implementation drive. Total projects per annum is in excess of 800 projects per year executed throughout Malaysia.

- Project Management
- Engineering, Procurement
- Construction Management
- Vendor Management & HSSE Management
- Authority Liaison Including Permits Handling

>1000

Projects

- Malaysia
- India
- Indonesia
- Pakistan
- Philippines



PROJECT MANAGEMENT SERVICES

Meinhardt also provides Project Management services for Shell.

Our in-house experts provide one-stop project delivery for a single complex project or a complete programme of capital investments with seamless integration from start to finish and quality outcomes.

We select the right Project Management team to match our clients' unique needs and expectations. Our project managers have local knowledge and are also supported by our group-wide skills, systems, and procedures.

Fast, responsive & innovative able to integrate with clients' systems, high-level rigour in project feasibility & risk analysis.

MRT RTS LINK PACKAGE 8 JB-Singapore

Rapid Transit System (“RTS”) Link is a shuttle link with double tracks of standard gauge of approximately 4km length serving 2 stations, one each in Woodlands, Singapore and Bukit Chagar, Johor Bahru. The RTS Link shall be a convenient and cost-effective system which is well integrated with transport services in both Woodlands, Singapore and Johor Bahru, Malaysia.

Meinhardt EPCM was appointed as EPC and shall deliver fully designed, procured, constructed, integrated and completed RTS Link Station Façade for Bukit Chagar Station.

- Architecture
- Structural
- MEP
- Façade
- Safety
- Construction Supervision
- BIM Support





Lembaga Zakat Selangor HQ

Meinhardt EPCM was appointed to provide Project Management Consultancy (PMC) services for the construction of Lembaga Zakat's HQ building.

The HQ Office Building is a 11-storey tower comprising of the following:

- 1 Basement carparking
- The total Gross Floor Area (GFA) is approximately 233,000 square feet

→ Project Management

IKEA Regional Distribution Centre Pulau Indah, Malaysia

IKEA's Regional Distribution Centre (RDC) in Pulau Indah is their biggest regional distribution centre within the Asia Pacific region.

The 95,000 square meter facility has an estimated storage capacity of approximately 192,800 m³ and a total of approximately 200,000 pallet positions. It houses both low bay and fully automated high bay racking systems.

Meinhardt EPCM is proud and honoured to be associated with IKEA for this prestigious project providing PMC and construction management (CM) services. This project was successfully delivered meeting all targets set by IKEA in spite of having to continue with works in a controlled manner during the Covid-19 pandemic.

- Project Management
- Procurement
- Construction Management
- HSSE Management



Nestle National Distribution Centre

Nestle leased their new 50,000 square meter warehouse from Axis REIT and made this their new distribution centre (DC) for Malaysia.

Meinhardt EPCM was engaged to carry out Project Management and HSSE Management as Nestle's representatives on-site. The project also involved the ID works for the offices and social blocks which was an added scope post award. This DC was completed in 2018 and is currently in operation.

- Project Management
- HSSE Management



Demolition & Construction Works for DHL

DHL Supply Chain intends to build a 2-storey warehouse in Bayan Lepas, Penang. DHL Supply Chain currently leases 300 million square meter of warehousing space. The Ground Floor consists of 9m ceiling clear height and floor loading of 4 tonnes/square meter while First Floor is 13m ceiling clear height and floor loading of 3 tonnes/square meter. Client targets to meet ESG needs (Carbon Neutral) by 2030.

- Project Management
- Quantity Surveying



Cainiao KLIA Aeropolis

Meinhardt EPCM was appointed by CCYR Malaysia to provide Design Management services for the construction of the Cainiao Aeropolis Logistics Hub located in Sepang, Selangor.

- Design Management

Due Diligence Study Data Centre

Meinhardt EPCM was appointed by client to conduct site due diligence studies to identify critical issues that may influence purchase and sale agreement negotiations that may impact future development of Data Center (DC) sites as identified by client.

Site Due Diligence

- KUL070 TPM
- KUL071 Nilai
- KUL072 Cyberjaya

Conceptual Master Plan and Preliminary Engineering, Site Development and Permitting Assessment, Water Infrastructure Assessment, Geotechnical Desktop Review, Geotechnical Investigation, Traffic Impact Assessment, Land Surveys – Topographic Survey, Boundary Survey, Existing Utility Survey

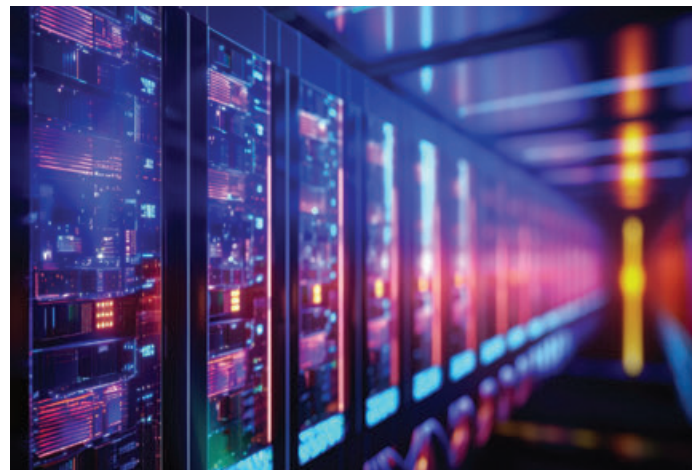
→ Technical Site Due Diligence

Data Center (Primary) in Johor

The leading developer and operator of high-performance data centers has outlined plans to construct multiple data centers and associated infrastructure in the Johor NTP and KTP locations. As part of their strategic growth initiative, they aim to expand their presence in these regions.

Meinhardt EPCM has achieved significant milestones in this endeavor. They were awarded the first PMC project for a 21.6MW facility in February 2024. Subsequently, they secured an additional 40MW project and a 275 KV Consumer landing station in NTP. In their role as PMC (Project Management Consultant), Meinhardt EPCM is also serving as the LEED consultant for the Gold certification of the KTP A Data Center. This ambitious undertaking reflects the company's commitment to advancing data center infrastructure and sustainability in the specified locations.

→ Project Management



Site Due Diligence Desktop Review for a New Data Centre

Site Due Diligence work for a 10-hectare plot of land in Johor included site assessment, planning control review / legal restriction, permitting overview and site utility review.

→ Site Due Diligence Desktop Review

Data Center Engineering Design

Meinhardt EPCM has been appointed as the Design consultant under a Design and Build contract by Gadang. Their task involves designing and constructing a 9.2MW Tier 3 Data Center in Cyberjaya, which will be known as the Klang Valley Data Center for the client TM.

→ DC Detailed Design Engineering



VALE – Project Deployment Management Lumut, Perak

Meinhardt EPCM was appointed by VALE Malaysia Minerals SB to provide PMC, Detailed Engineering design and Permitting support for the development of the 40 MTPA expansion project in Lumut.



VALE Malaysia Minerals SB

Meinhardt EPCM was appointed by VALE Malaysia Minerals SB to provide Design Services, Quality Estimations, and complete Engineering solutions for their storm water ponds. VALE Malaysia owns and operates the Teluk Rubiah Maritime Terminal, which is located in Manjung district, Perak state, Malaysia.

- Engineering Consultancy
- Quantity Surveying

- Technical Specifications
- Engineering Calculations
- Civil & Structural Engineering
- Mechanical & Electrical Engineering
- Automation
- Pneumatic & Hydraulics



Continental Tyres

Continental extended their existing tyre manufacturing plant by approximately 26,000 million square feet in Alor Setar, Kedah in 2017 and Meinhardt was appointed to provide EPCM services. The works mainly include the extension of their production capacity apart from installation of new equipment and assets within the new expansion area.

- Project Management Consultancy
- Construction Management Consultancy
- Vendor Management
- HSSE Management

SilTerra

Meinhardt EPCM was appointed as Client's PMC and CM Consultant for the FAB 1E Expansion that includes Central Utilities Building (Chemical, Gas, water treatment, EE & MEP) Project in Kulim Hi-Tech Park, Kedah, Malaysia. Meinhardt is part of the expansion team as we provided the right support and consultancy to client by understanding their needs and coordinating with the appointed contractor to deliver the project successfully.

- Project Management Consultancy
- Construction Management Consultancy



Accenture Corporate Offices

Meinhardt EPCM was appointed to provide Quantity Surveyor (QS) and Cost Management services for Accenture's fit-out works of their proposed Corporate Offices located at the Exchange 106, Tun Razak Exchange (TRX), Kuala Lumpur.

- Quantity Surveying
- Cost Management

McCormick



Meinhardt EPCM was appointed to provide full EPCM services for the development of a black pepper plantation and processing facility in Merang, Terengganu. This project is currently ongoing and is anticipated to complete by end 2025.

→ EPCM

Johnson Matthey



Meinhardt EPCM was appointed to provide FEED Study, Basic Design and PMC Services for their Batching Optimisation project in Nilai. The main objective of the project was to relocate the slurry preparation process from 1st floor to the mezzanine floor. Our scope includes:

- 2 nos. – Q25 Mill relocation from 1st floor to Mezzanine.
- Existing Powder handling system relocation to mezzanine and upgradation to eliminate / reduce dust emission.
- Replacement of existing mixers of Premix tank T-2500 (2 nos.), T-1600 (1 no.) as per JM standards
- Setting up new Wash coat Lab at 2nd floor

→ EPCM

CIBA Vision (Alcon)



Meinhardt EPCM was appointed to develop FEED and Basic Engineering services for their proposed expansion for CIBA Vision in Johor. This scope has been completed and the Client is awaiting internal funding to proceed with next phase of the project.

→ EPCM

Reckitt Benckiser



Meinhardt EPCM undertook this study in November 2021 and completed it in January 2022. Await Reckitt direction as to proceed with upgrading works or to relocate their operations.

→ Due Diligence

Dyson MAM 736 Engineer & Project Managemen



Dyson Malaysia Sdn Bhd (“Client”) is having an advanced manufacturing facility named MAM1 in Senai, JB. The facility manufactures and assembles its proprietary vacuum cleaners and other air products. Hence, Dysons requires 100% backup to the electrical system in the event of a power failure, especially to the furnace area.

→ EPCM

Farmbyte



Meinhardt EPCM was appointed by Farmbyte SB to provide the consultancy services for Architecture, Civil & Structural (C&S) and Mechanical, Electrical & Plumbing (MEP) and QS service.

- Architecture
- Civil & Structural Engineering
- Mechanical & Electrical Engineering
- Quantity Surveying

Mondelez International



Cadbury Confectionary Malaysia Sdn. Bhd., a subsidiary company of Mondelez International, has appointed Meinhardt EPCM to provide Engineering, Procurement and Construction Management services for its proposed expansion. The new buildings will host a new crumb production line, a warehouse and additional services areas. The project aims to be commissioned in Q2 2025.

- EPCM
- Statutory Permitting
- Application Approvals & CCC

Cenviro



Meinhardt EPCM was appointed by Mutiara Etnik SB to provide full design Consultancy Services for the design of the plant at CRR, Bukit Pelandok, Negeri Sembilan.

Our services commenced in April 2023 and is anticipated to complete by April 2025.

- Mechanical & Electrical Engineering
- Process Design Consultancy

Plastic Energy



Plastic Energy has intention to develop an advanced Chemical Recycling Plant at Petronas Refinery and Petrochemical Complex (PRPC) in Pengerang, Johor, Malaysia to convert 33,000 tons per annum non-recyclable "End-of-Life" plastic waste (ELP) into high grade oils known as TACOIL which can be transformed back into food-grade recycled plastics or alternative low carbon fuels by third parties.

- Architecture
- Civil & Structural Engineering
- Mechanical & Electrical Engineering
- Instrumentation & Automation
- Statutory Permitting

AVIATION

120+
Projects Worldwide

RAIL & METRO

150+
Mass Transit Projects
10 Multi-Modal Transport Hubs
500 KM of Railway



Changi Airport Terminal 1 Upgrading
Singapore



West Kowloon HSR Terminus
Hong Kong

Hamad International Airport Expansion
Qatar



C9181C Downtown Line Stage 3
Singapore



HKIA Midfield Concourse
Hong Kong



Green Line Metro
Qatar

Bhogapuram International Airport
India



Manila Metro Line 7
Philippines



ROADS, BRIDGES & TUNNELS

7,000+ km

Highways, Roads
200+ Bridges
>100 Tunnels (150km)

PORTS

20+

Major Ports & Jetties



Yamuna Expressway
India



SP-PSA International Port
Vietnam

Shatin Central Link
Hong Kong



Chek Lap Kok Passenger Ferry Terminal
Hong Kong



Phu My Bridge
Vietnam



Saigon International Terminal
Vietnam

Marsa Junction Flyover
Malta



Castle Peak Power Station Reclamation & Jetty
Hong Kong



DATA CENTRE

100+
Projects Worldwide



Moro Data Centre
UAE

Telin3 Data Centre
Singapore



NTT-JKT3 Data Center
Indonesia



Oman Data Park Data Center
Oman



EDUCATION

2,000+
Projects Worldwide



SMU-X Connexion
Singapore

Teaching Building Complex at Western Campus Chinese University
Hong Kong



Lee Kong Chian School of Medicine, Novena and Yunnan Campus
Singapore



Queensland University of Technology
Australia



HEALTHCARE

150+

Projects Worldwide

SPORTS & COMMUNITY

50+

Projects
Total cap. 700,000+



Sengkang General & Community Hospital
Singapore



Sports Hub
Singapore
(Accredited Checking)

Box Hill Hospital
Australia



Kai Tak Sports Park
Hong Kong
(Independent Design Checker)



Bumrungrad International Hospital
Thailand



Senegal National Stadium
Senegal

Military Medical Complex
Qatar



Kigali Arena
Rwanda



Meinhardt (Malaysia) Sdn Bhd
Jurutera Perunding Meinhardt Sdn Bhd

Suite 9.01-9.07
Level 9, AMODA,
22 Jalan Imbi
55100 Kuala Lumpur
Malaysia

T +603-27109488
E meinhardtkl@meinhardtgroup.com

Meinhardt EPCM Sdn Bhd

Suite 12.01-12.07
Level 12, AMODA,
22 Jalan Imbi
55100 Kuala Lumpur
Malaysia

T +603 9212 7676
E epcmsales@meinhardtgroup.com

Meinhardt Facade Technology (Malaysia) Sdn Bhd

Suite 17.02
Level 17, AMODA,
22 Jalan Imbi
55100 Kuala Lumpur
Malaysia

T +603-27109488
E info.my@mfacade.com

